

# Instructional Poster

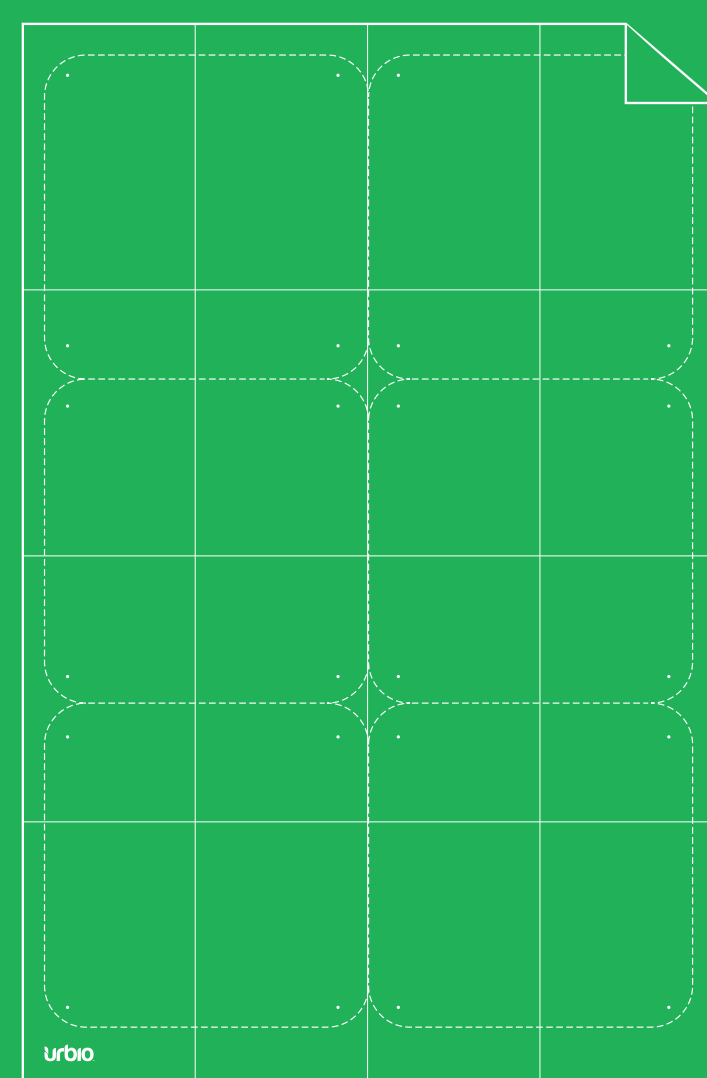
# urbio™

# 1:1

Instructional Poster

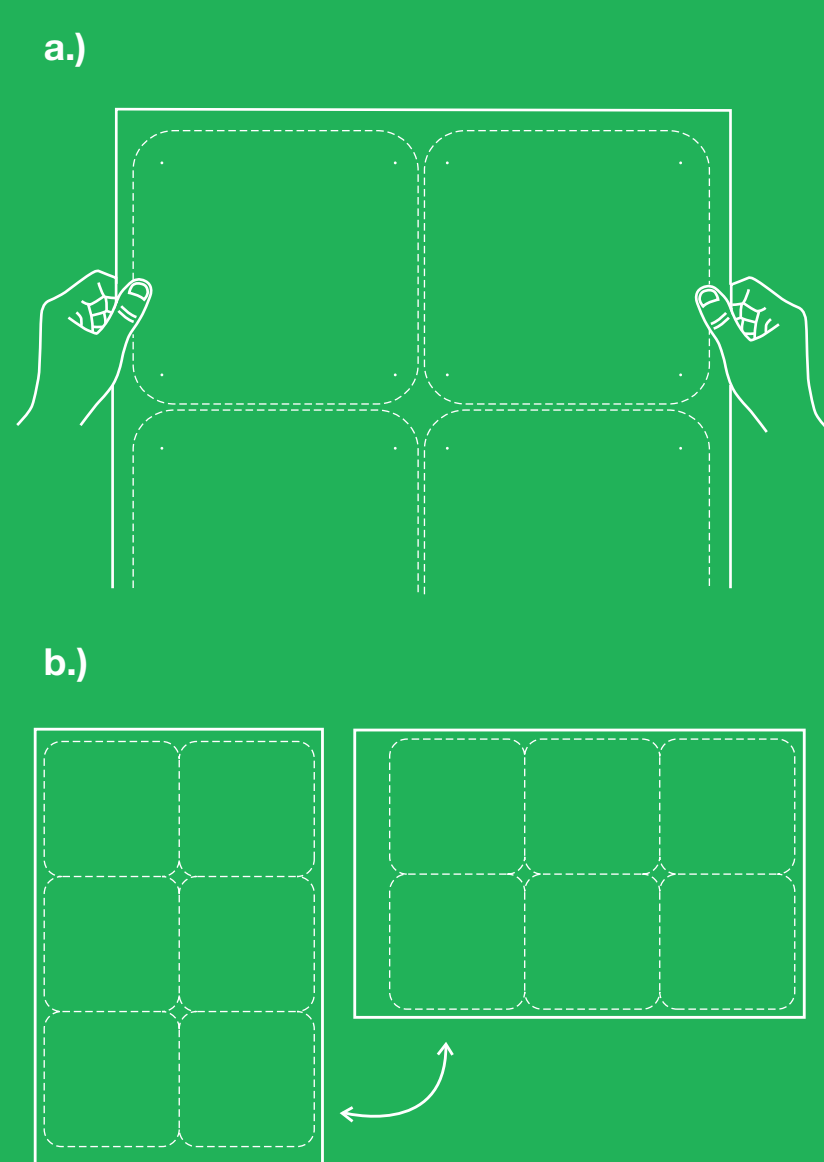
## How To Use Your Poster 01

Welcome to your very own Urbio experience! This poster will be your guide for setting up your Urbio Vertical Garden within your own living environment. It will also provide placement aid, installation instructions, product specifications and tell you how to plant your Urbio. Even hang it as a poster! Let's get started!



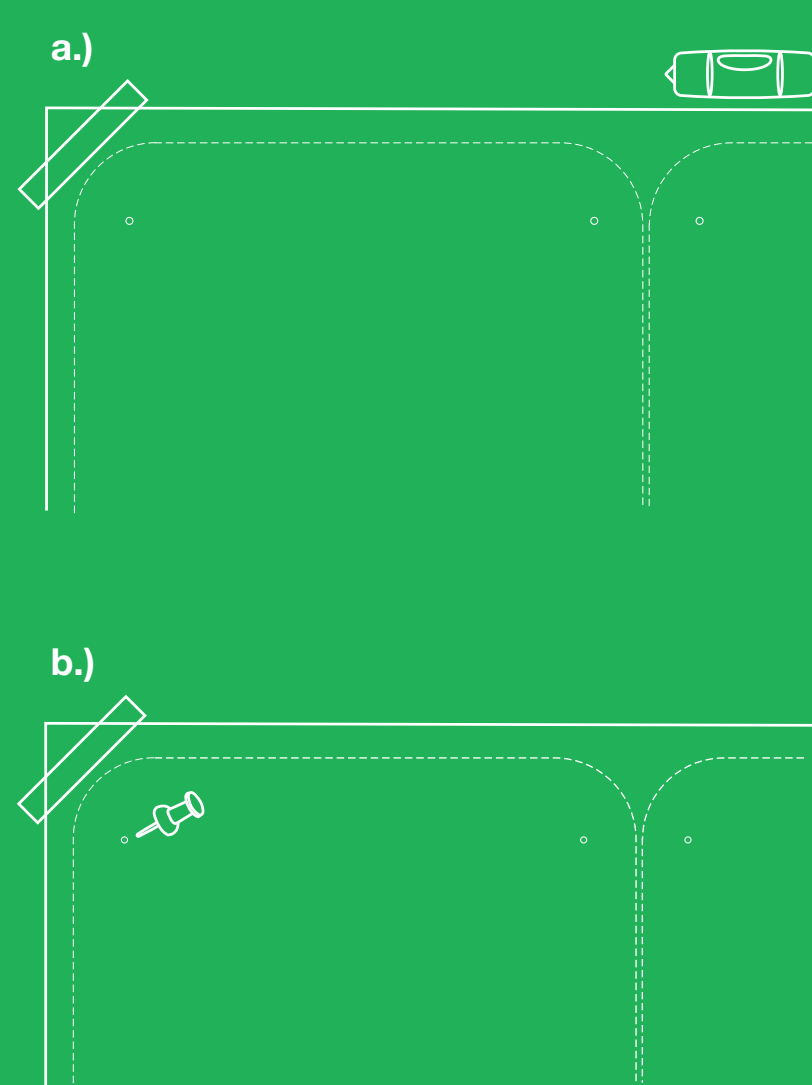
## Urbio Placement Aid 02

Hold the poster flat up against the wall to determine placement of the wall plates before installing. This will ensure you are confident in the placement of your wall plates. The poster can be used in multiple orientations for any number of wall plates, so feel free to turn the poster and explore a variety of placement options.



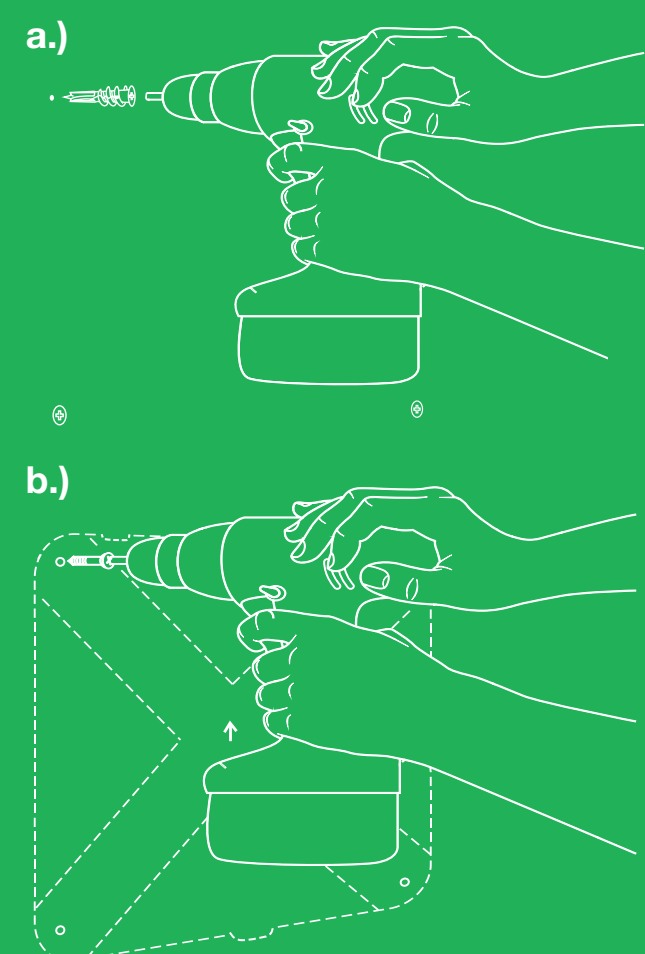
## Positioning Your Plates 03

Once you have decided where to place your Urbio Vertical Garden, make sure the poster is straight by using a level. Secure the poster to the wall with tape to ensure it does not move. Push a thumbtack through the marked holes on the front of the poster to leave drill marks on your wall for when you attach your brackets. Remove poster from the wall once you are finished.



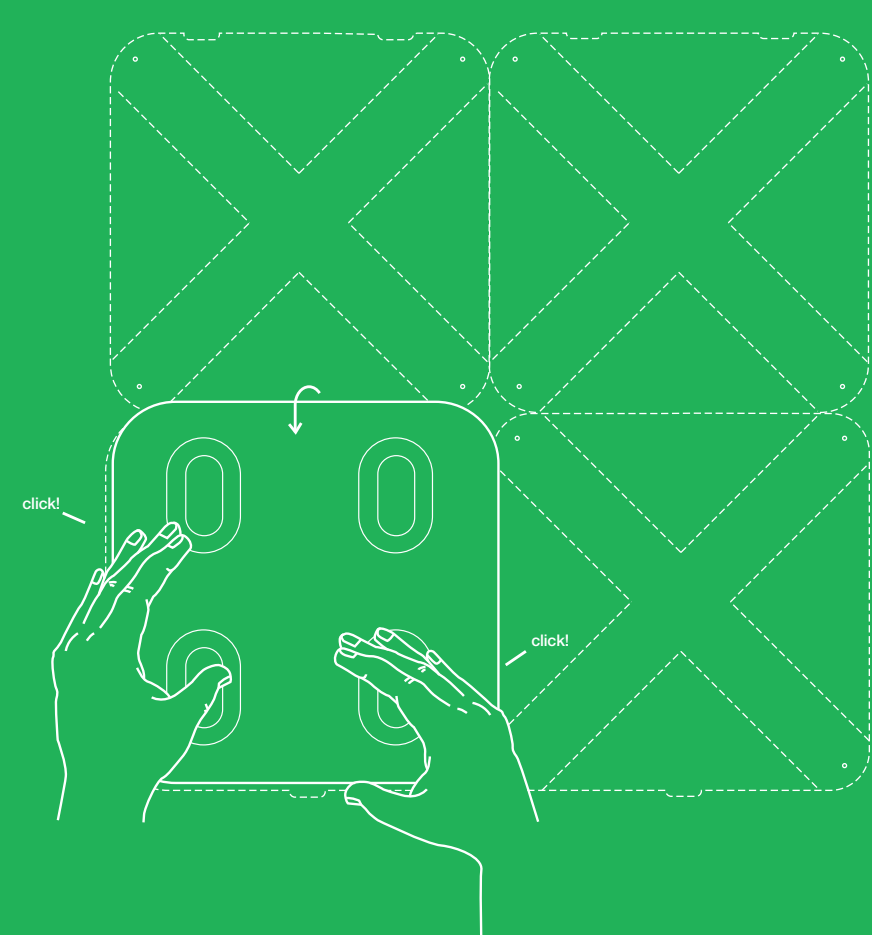
## Attach Brackets To Wall 04

Drill sheetrock anchors into each hole (if a stud is present, drill without sheetrock anchors). Proceed to align your bracket holes to the thumbtack or anchor holes on your wall, double checking that they are in the correct orientation and that they are level. Drill the screws directly into the wall through each bracket to ensure a tight and secure attachment.



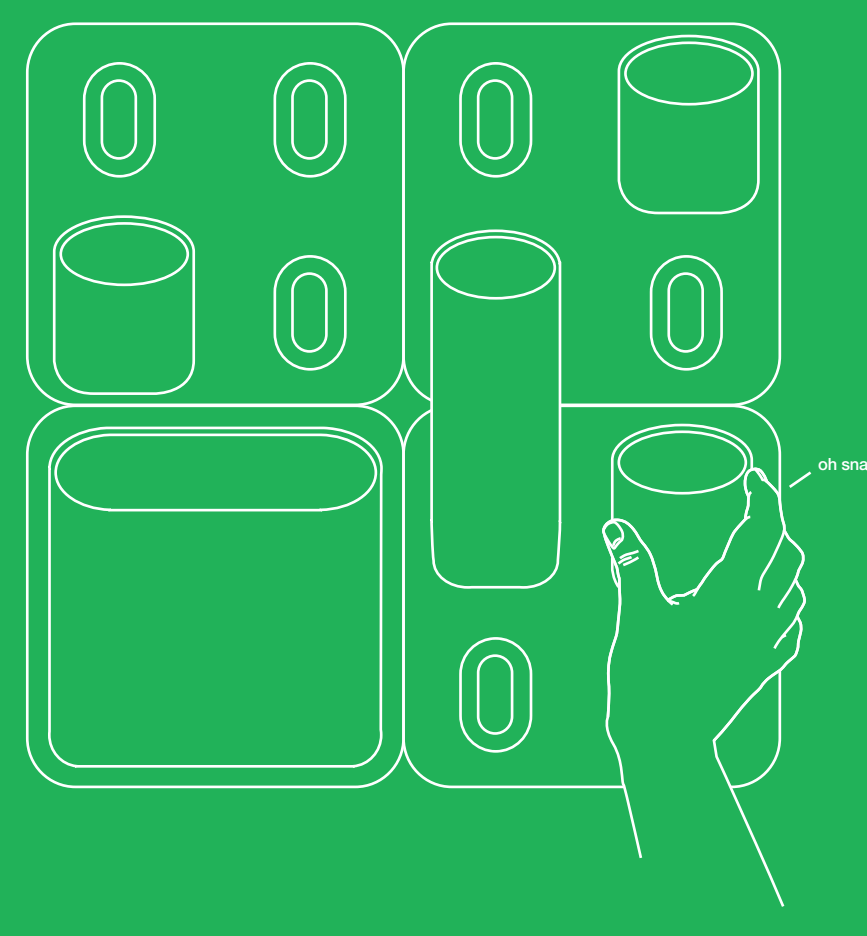
## Attach Plates To Brackets 05

Once the brackets have been secured to the wall, you can attach the wall plates. We recommend that you start attaching each plate beginning with the bottom row and finishing at the top. Slide the cleats on the top of the wall plate into the holes on the top of the bracket, then swing the plate down and firmly press the bottom to the wall. The plates should "click" into place.



## Attach Vessels To Plates 06

Get ready for the best part, it's time to Urbio! Unpack your vessels and start attaching. Have fun experimenting with different configurations and creative ways you can utilize each vessel. Start planting, organizing and of course, enjoy!



## Full Product Line Specs:



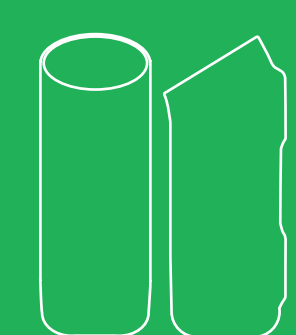
### Shorty

**Dimensions:**  
5" deep x 4" wide x 5" tall  
**Max Weight Load:**  
Plate - 1.25 lbs



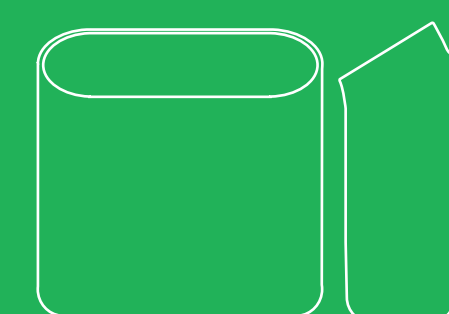
### Wide Mouth

**Dimensions:**  
5" deep x 10" wide x 5" tall  
**Max Weight Load:**  
Plate - 2.5 lbs



### String Bean

**Dimensions:**  
5" deep x 4" wide x 10" tall  
**Max Weight Load:**  
Plate - 6 lbs



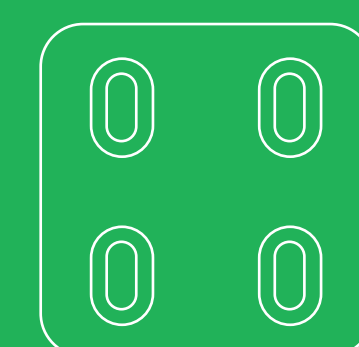
### Big Daddy

**Dimensions:**  
5" deep x 10" wide x 10" tall  
**Max Weight Load:**  
Plate - 18 lbs



### Bracket

**Dimensions:**  
0.5" deep x 10" wide x 10" tall



### Metal Wall Plate

**Dimensions:**  
0.5" deep x 10" wide x 10" tall



### Metal Wall Puck

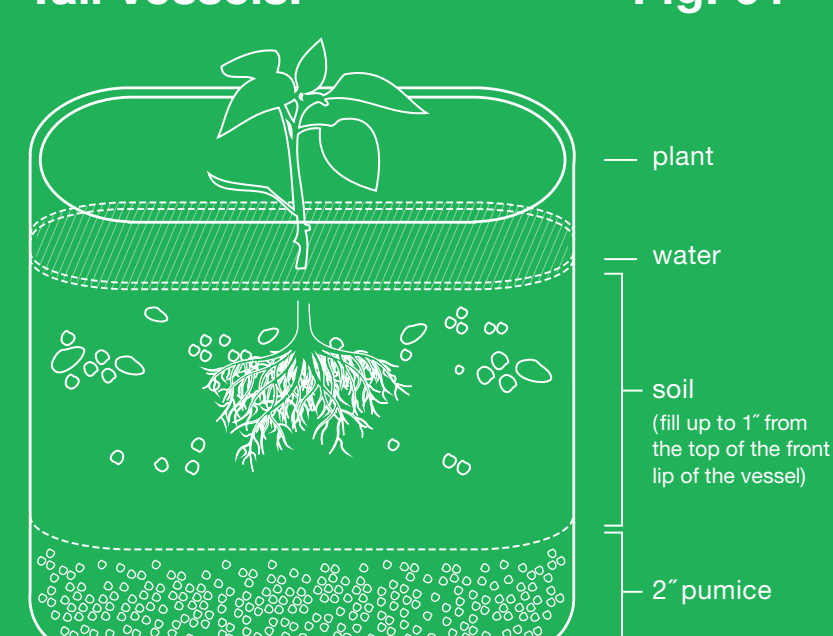
**Dimensions:**  
0.5" deep x 1.5" wide x 2.75" tall  
**Installation:**  
Use front of poster to position multiple wall pucks.

## Planting Urbio 07

We wanted to create a product that would have little to no mess. That's why Urbio vessels are detachable. Remove your vessels from the wall to water, replant, aerate, prune, etc., at your convenience.

Pumice stones are key to successful growing with Urbio. Pumice manages water drainage, aerates and prevents root rot. Just remember to never over water and plants will flourish! We recommend researching about your specific plant for watering instructions.

### Tall Vessels: Fig. 01



### Short Vessels: Fig. 02

